



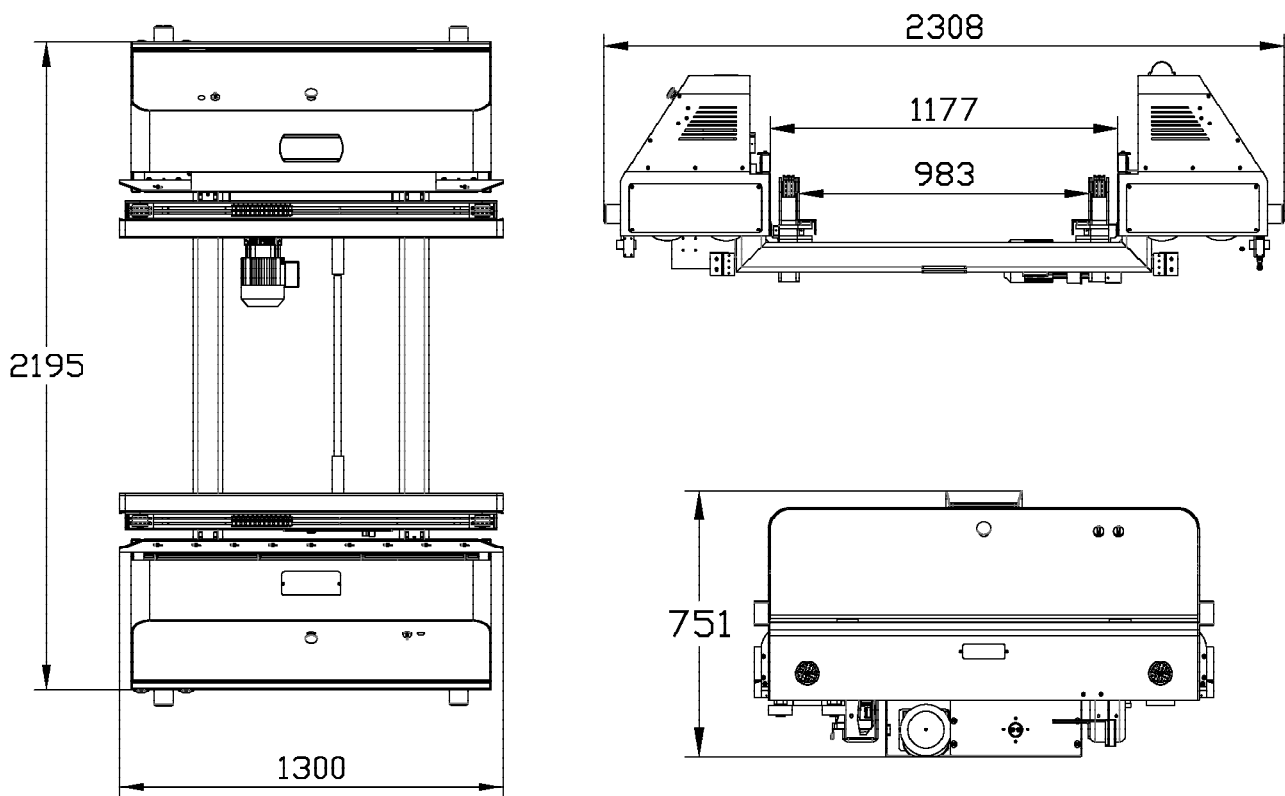
穿梭母车 Shuttle Carrier

音锋股份
www.enfon.com.cn

ENFON

由无线穿梭车、穿梭母车、提升机、输送机、管理系统等核心产品组成的子母穿梭车系统，该方案是一种全自动化的密集存储系统。

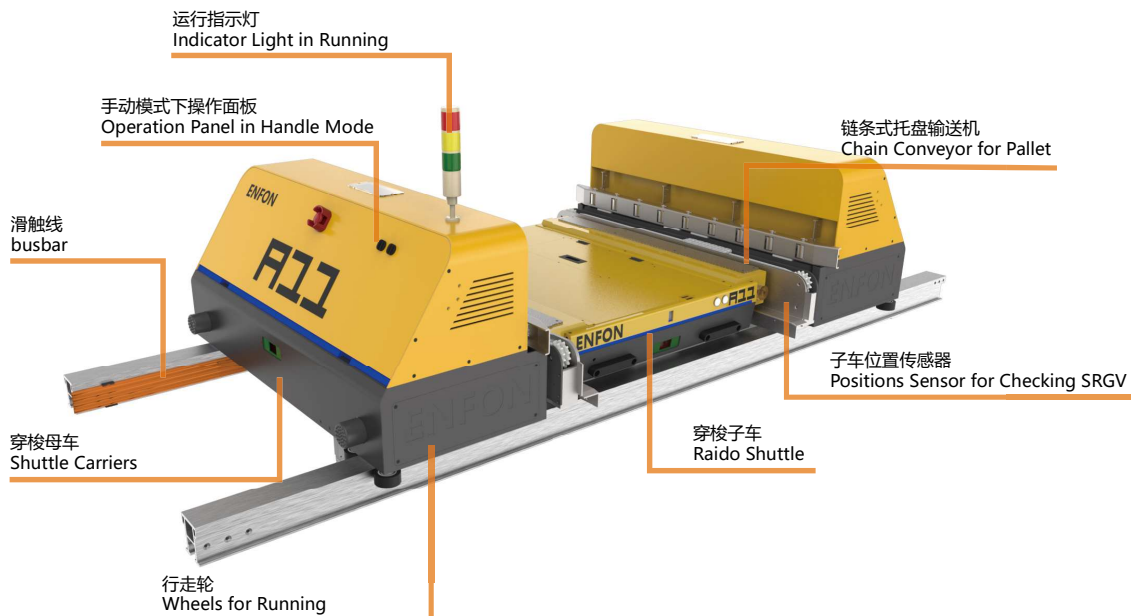
The shuttle carrier system is composed of radio shuttle, shuttle carrier, lifter, conveyor, management system and other core equipment. It is responsible for transfer, storage.

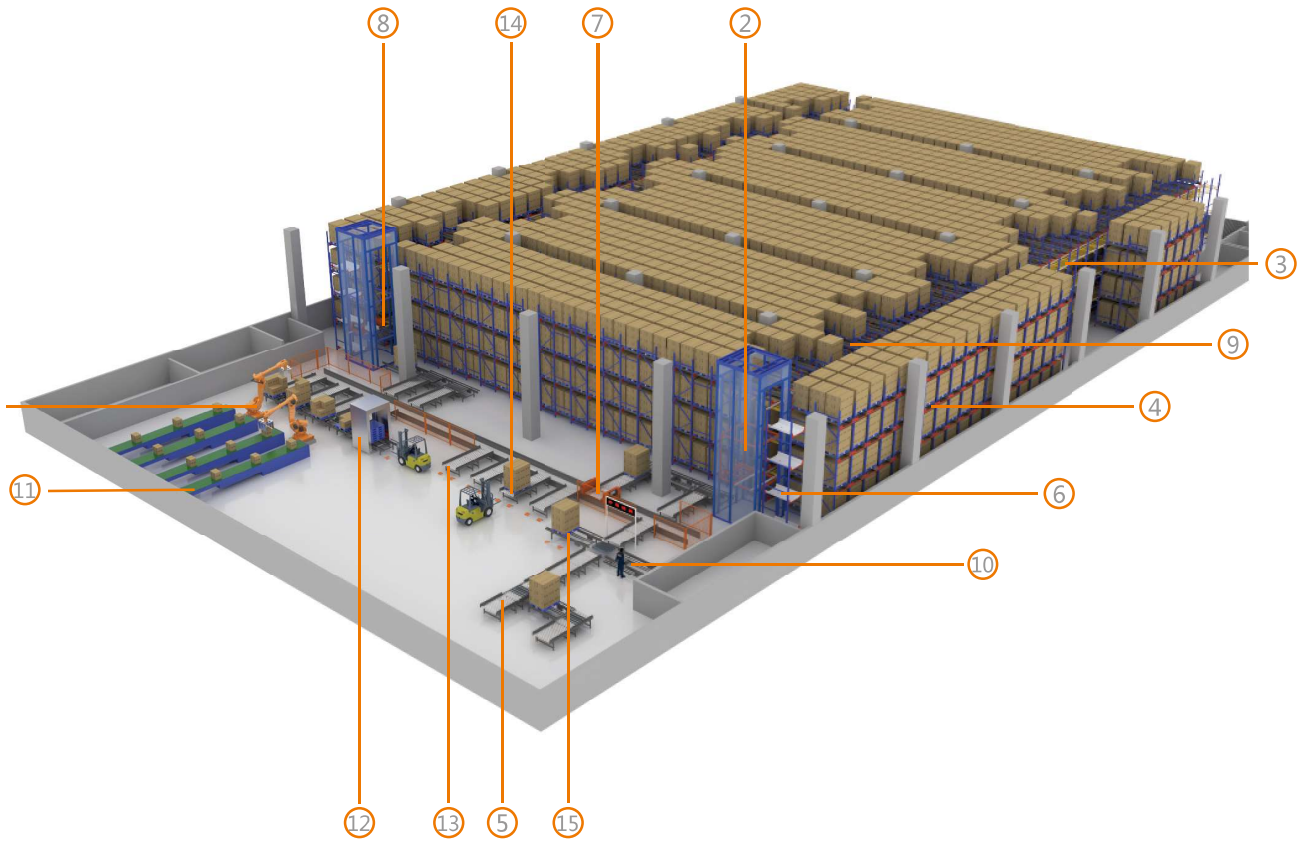


由无线穿梭车、穿梭母车、提升机、输送机、管理系统等核心产品组成的子母穿梭车系统，子母穿梭车可以通过换层提升机实现不同层作业，该方案是一种全自动化的密集存储系统，负责对托盘货物的输送、存储和管理，结合 ECS 通讯实现 WCS 对硬件设备的调度与监控，通过 WMS 系统与数据层交换数据，对系统数据、权限、任务、报表、日志等进行综合管理。

Management system and other core equipment. This fully-automated system can achieve operation in different level by lifter. It is responsible for transfer, storage, retrieval and management. The warehouse management system (WMS) achieves control and inspection of hardware with ECS communication and achieves management of system data, authority, task, report, log, etc. with WMS and data layer.

无线穿梭母车主要技术参数表 Main Data Sheet of Carrier for Rail Guided Vehicle		设备型号 Equipment Model		
ITEM	参数规格 The Specification	CRGV-800(L)	CRGV-1300(L)	CRGV-1500(L)
1	适用托盘 Suitable Pallets :	W1100 ~ 1250 D800 ~ 1100mm (依据穿梭子车标准)		
2	输送负载总重量 Total Weight of Loading	Max 800Kg	Max 1300Kg	Max 1500Kg
3	空载行走 Speed Type Without Loading			
3.1	高速型空载 High Speed Type Without Loading	180m/min		
3.2	中速型空载 Middle Speed Type Without Loading	150m/min		
3.3	低速型空载 Lower Speed Type Without Loading	120m/min		
4	满载行走 Speed Type With Max Loading			
4.1	高速型空载 High Speed Type With Max Loading	150m/min	130m/min	110m/min
4.2	中速型空载 Middle Speed Type With Max Loading	130m/min	100m/min	100m/min
4.3	低速型空载 Lower Speed Type With Max Loading	100m/min	90m/min	90m/min
5	横移输送速度 Speed of Transfer	12m/min		
6	行走驱动电机 Driver Motor for Running	SEW 380V 2.2KW	SEW 380V 3KW	SEW 380V 4KW
7	横移电机 Driver Motor for Transfer	SEW 380V 0.37KW	SEW 380V 0.55KW	SEW 380V 0.75KW
8	供电方式 Power System	滑触线供电 sliding contact line 380V		
9	通讯方式 Methods of Communication Control			
9.1	与上位机 Communication With Host Computer	光通讯 or WIFI 5.8GHZ		
9.2	与子车 Communication With SRGV	WIFI 5.8GHZ		
10	控制模式 Model of Control	手动 Handling / 自动模式 Automatic Model		
11	使用环境温度 Temperature of Warehouse	-5 ~ 50°C (Normal) / -20 ~ -5°C (Cryogenic)		
12	运转噪音值 Noise Peak of Running	<70DB		
13	母车供电方式 TPower supply of shuttle carrier	380V 滑触线 (Busbar)		





1. 拆垛机器人 depalletizer robot
2. 穿梭母车换层提升机 inter-level lifter
3. 穿梭母车轨道与供电系统 shuttle carrier rail and power supply
4. 穿梭式货架 shuttle racking
5. 托盘输送线 pallet conveyor
6. 穿梭车充电装置 shuttle charging station
7. 地面摆渡车 ground transfer cart
8. 穿梭母车 shuttle carrier
9. 穿梭子车 radio shuttle
10. 异常托盘垛人工处理工位 abnormal pallet working position
11. 伸缩皮带机 telescopic belt conveyor
12. 托盘码垛机 pallet palletizer
13. 托盘入库口 pallet loading entrance
14. 整托盘出库口 pallet unloading exit
15. 穿梭式货架尾盘处理区 pallet processing area